

## 01. Overview

- Summarize 5
- Front view 6
- Side view 7
- Rear view 8
- SZM overview 9
- Door 11
- Vehicle parameters 12

## 02. Vehicle Lock

- Vehicle Key 13
- Door Lock 13
- Front Lock 14
- Starting Switch 14

## 03. Driving environment

- Meter Information 15
- Lights Switch 16
- Windshield Wiper Footboard 18
- Gear Switch 18
- Seat 19
- Parking Brake 20
- Main Power Switch 21
- Glass Lifter 22
- Radio/Media Player 23
- Heating 24
- Storage Box 25
- Cell Holder 26
- Vehicle plate 26

## 04. Notes

- Inspection before start 27
- Start 27
- Attentions 27
- Charging 28
- Tire 29

## 05. Emergency Measures

- Replace tire 24
- Trail car 24

## 06. Maintenance

- Battery 32
- Brake 33
- Motor 34
- Differential 35
- Car cleaning 35
- Fuse box 36

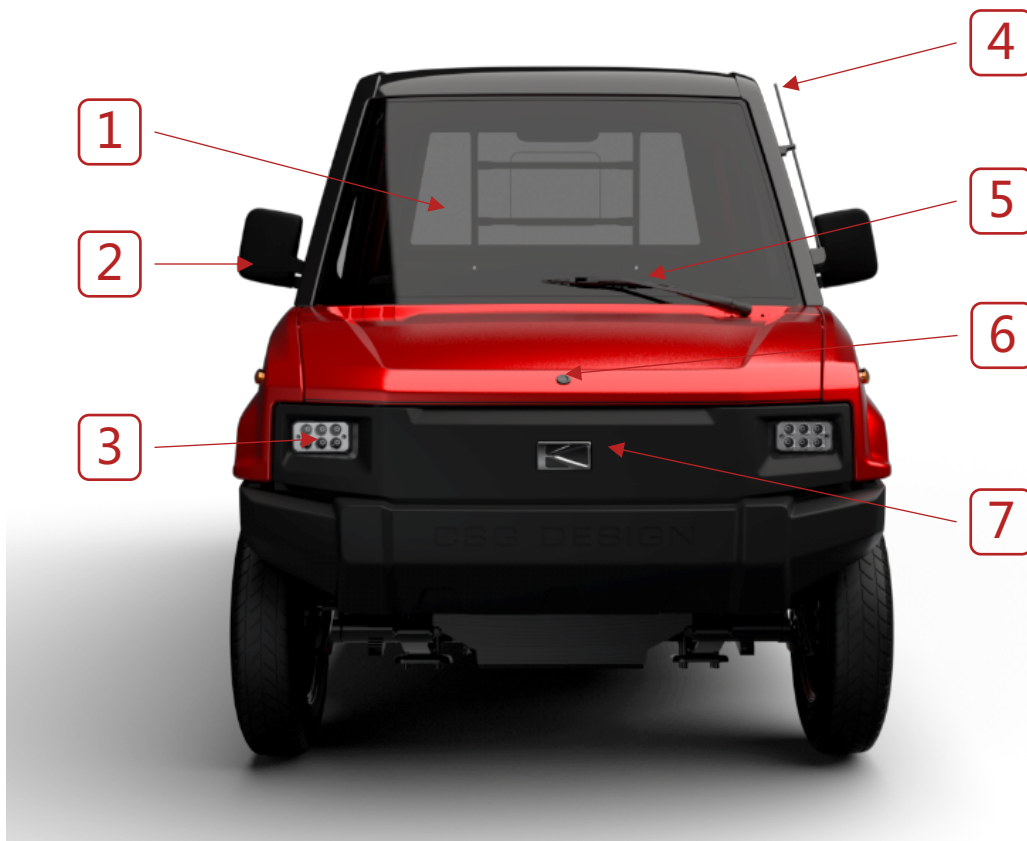
## 07. Vehicle Warranty

- Vehicle warranty 37
- Scope not covered by warranty 38
- Maintenance records 40

## 08. Customer Information Record

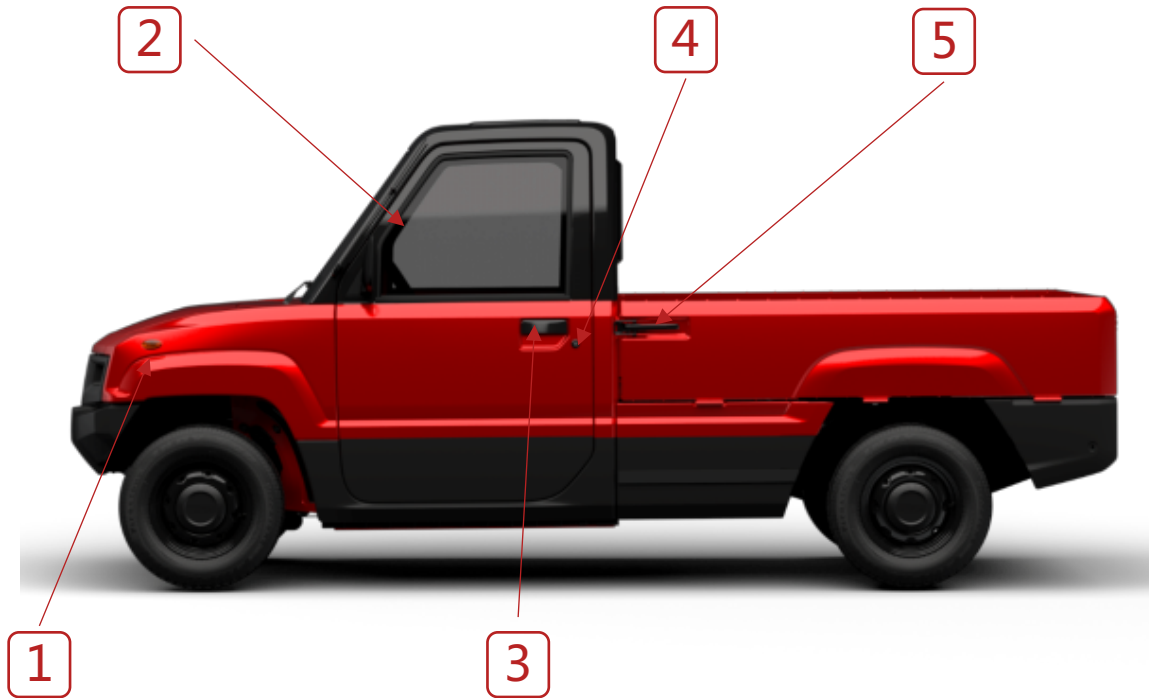
- Customer Information Record 41

## Front view



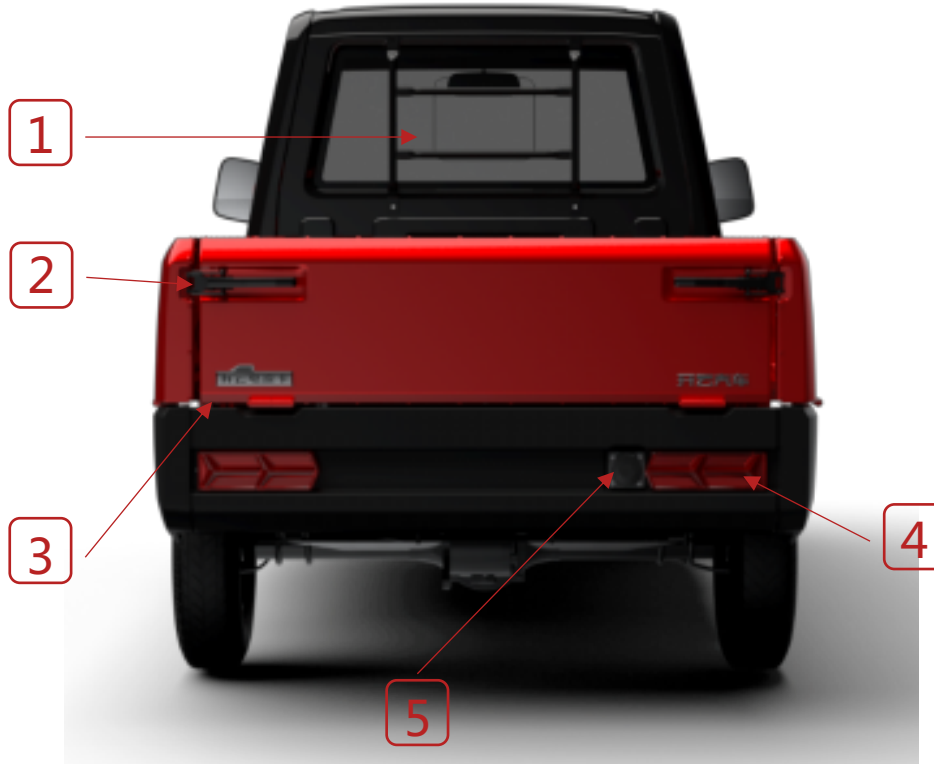
1. Front windshield glass
2. Rear view mirror
3. Beaming lights
4. Radio antenna
5. Wiper
6. Front tunk lock
7. KAIYUN Logo

## Side view



1. Steering lamp
2. Door glass
3. Door handle
4. Door Lock
5. Main cabin handle

## Rear view



1. Rear windshield glass
2. Tail door handle
3. Vehicle Logo
4. Rear combined lights
5. Charging plug

## SZM overview (LHD)



1. Phone bracket
2. Left storage box
3. Speaker
4. Brake pedal
5. Accelerator pedal
6. Ignition key hole
7. Gear switch
8. Speedometer
9. Radio controllers
10. Radio/Media Player
11. Heating/defrost controller
12. 12V plug
13. Right storage compartment
14. USB

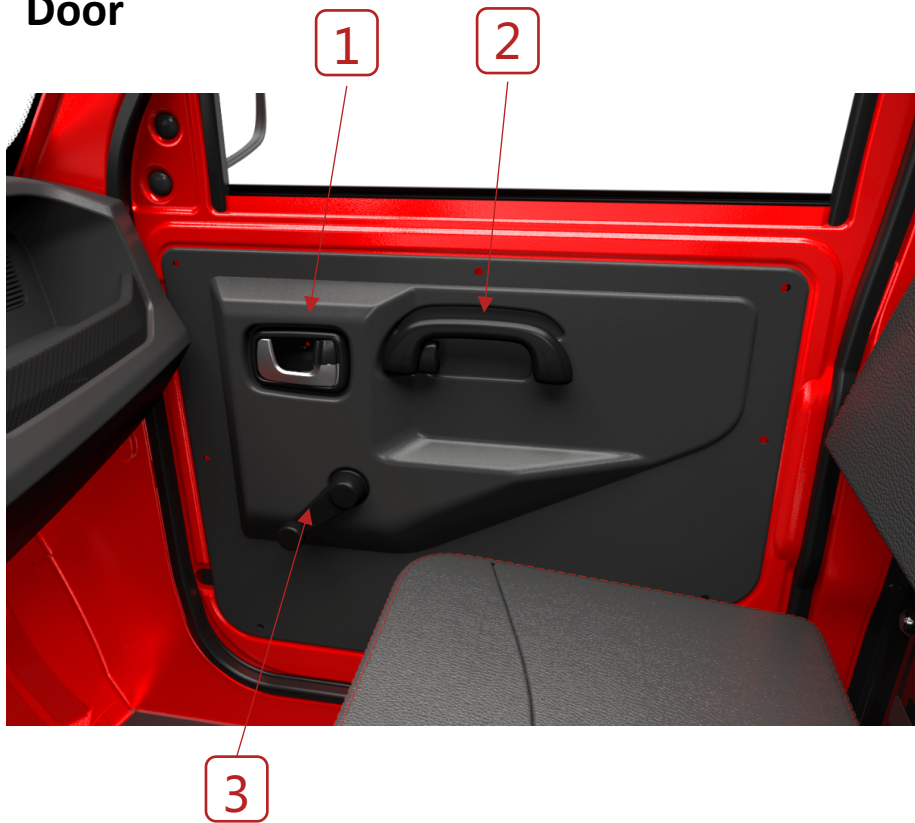
# Overview

1. Phone bracket
2. Left storage box
3. Speaker
4. Brake pedal
5. Accelerator pedal
6. Ignition key hole
7. Gear switch
8. Speedometer
9. Radio controllers
10. Radio/Media Player
11. Heating/defrost controller
12. 12V plug
13. Right storage compartment
14. USB

## SZM overview (RHD)



Door



- 1. Door lock
- 2. Door Handle
- 3. Window handle

## Vehicle parameters

Basic Parameters	
Vehicle Serial number	KY10220
Vehicle size (mm)	3475×1375×1550
Cabin size (mm)	1620×1245×300
Wheelbase (mm)	2315
Curb weight (kg)	670
Rated load capacity (kg)	300
Rated seats capacity	2
Chassis System	
F/R suspension type	Parallel leaf spring type
Braking system	F disc R drum
Tire size	145/R12
Driving type	Rear motor RWD

**Note 1:** Rated load capacity, 300kg/standard version, 600kg/heavy load version;

**Note 2:** Rear axle leaf spring, 4pcs/standard version, 7pcs/heavy load version;

**Note 3:** Max range is based on without load, 25°C, constant speed 35km/h.

Technical Parameters	
Maximum speed (km/h)	40
Max Range (km)	110
Maximum gradeability	20%
Minimum ground clearance (without load, mm)	≥150
Minimum turning radius (m)	≤4.5
100 km power consumption (kwh)	6
Charging time (h)	8-10
Power System	
Battery type	VRLA maintenance-free power battery
Battery capacity	60V/100Ah
Motor type	AC asynchronous motor
Rated power (kw)	3

## Vehicle Key



The car is equipped with two keys suitable to vehicle start, open/close doors and front trunk.

### ⚠ NOTE:

Please keep your keys in a safe place to avoid unnecessary trouble.

## Door Lock



Insert the key into the key hole and turn it clockwise to unlock the door. Pull the handle and open the door.

### ⚠ NOTE:

To open the passenger's door when the car is locked, first access the cabin from the driver's side and then open the door.

## Inner Door lock



In the cabine, pull the handle to open the door handle.

### ⚠ NOTE:

Before getting off the vehicle switch the lock, get out off the car and close the door. This way the vehicle cannot be opened from the outside, which will prevent it from being stolen. When children are in the car to prevent any unnecessary accidents please make sure that the lock is switched on.

## VEHICLE LOCK

### Front Lock



Use the vehicle key to access the front trunk.

**▲ NOTE:**

When opening the front cover, use the cover ejector to avoid the danger of the cover falling quickly.

### Starting Switch



The vehicle key switch is located in the middle panel. To start the car insert the key into the keyhole and turn it clockwise. When parked, turn it counterclockwise and pull out the key.

**▲ WARNING:**








Do not leave children alone in the car to avoid accidents.

## Meter Information



1. Speed display
2. Turning lights indicator
3. Gears indicators
4. Battery indicator
5. Vehicle mileage indicator
6. Low Battery warning sign
7. Headlight indicator
8. Parking brake display

## Indicator Light Signal

Symbol	Meaning
	Right turn indicator
	Left turn indicator
	Parking brake enabled
	Headlight on
	Forward gear
	Neutral
	Reverse gear



When the key is just turned on, the meter will display the current battery voltage, and will change to the mileage value after 3 seconds.

**▲ NOTE:**

When the vehicle is fully charged, the battery indicator will display all the bars. When the low battery symbol flashes, it indicates that the battery has low power left and the vehicle needs to be charged immediately.

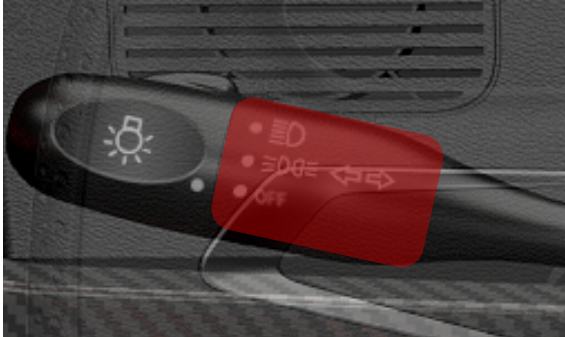
## Lights Switch



**Direction indicator / flashing light**

Turn left and move the lever switch down.

Turn right and move the lever switch up, The steering rear lever switch will remain in the corresponding position and needs to be manually returned to the default position.



### Switch of headlight

Turn the top switch of the lever. When the switch is turned to the "OFF" position, the headlights are turned off. Turn the switch up to turn on the width indicator. Turn the switch twice to turn on the low beam. Keep the low beam state and turn the lever down to open the vehicle's high beam.



### Safety warning light switch

The safety light switch is located above the center switch. Press the button to turn on the safety warning light and lift the button to turn off the safety warning light.

#### ▲ NOTE:

In case of the accident, the vehicle needs to turn on the safety warning light switch when parking on the road.



### Indoor light switch

The indoor light is located on the sun visor. Press the marked with red switch to turn it on or off.

#### ▲ NOTE :

There is an insulation sheet between the new car lights and the battery needs to be removed before use. The insulating sheet is on the right side of the light, partially exposed, and can be pulled out directly. When the indoor lighting is weak, the battery needs to be replaced.

## DRIVING ENVIRONMENT

### Windshield Wiper



#### Windshield Wiper Switch

Press the lever down to control the wiper switch.

**▲ NOTE:**

The windshield must be kept moist when the windshield wiper is in operation. Before starting the wiper in winter, make sure that the wiper blade is not frozen and that the ice and snow on the windshield have been scraped off.

### Footboard



The left side of the figure is the brake pedal and the right side is the accelerator pedal.

**▲ NOTE:**

Be sure to always step on all pedals smoothly. The foot pads should always be securely fixed in the foot space. Never place a foot pad or other carpet on an installed foot pad. Make sure that no items enter the driver's foot space while driving.

### Gear Switch



The shift switch of the knob has three gears: "D" forward gear, "N" neutral, "R" reverse. When the key switch is turned on, the indicator on the rotary button will illuminate to indicate the current gear.

**▲ Warning:**

When parking, the shift knob should be turned to the "N" position to avoid the danger of sudden vehicle movement caused by accidental depression of the accelerator pedal.

## Seat

The seat is a main split seat.

The driver's seat can be adjusted back and forth by the lever.

The passenger's seat is fixed, and the backrest is hung on the tailgate and can be removed manually.

The vehicle has a three-point seat belt. Be sure to fasten your seat belt before driving for your own safety.

The seat belt should be close to the body in order to provide the best protection.

### Fasten your seat belt

Pull the seat belt slowly and insert the lock into the seat belt buckle. When you hear a loud “beep” sound, the seat belt is locked.

### Unfasten the seat belt

Press the red button on the buckle and then retract the seat belt. If the seat belt cannot be retracted, retract it by hand to avoid slacking.

### The seat belt may become stuck and cannot be pulled out under the following conditions:

- When pull too fast
- Braking and acceleration
- If the vehicle is over tilted



**⚠ NOTE:**

Do not use clips or anything that might prevent the seat belt from being properly secured.

Make sure the seat belt is not twisted or caught by anything.

The hip belt should be lowered as far as possible (not to be worn over the abdomen).

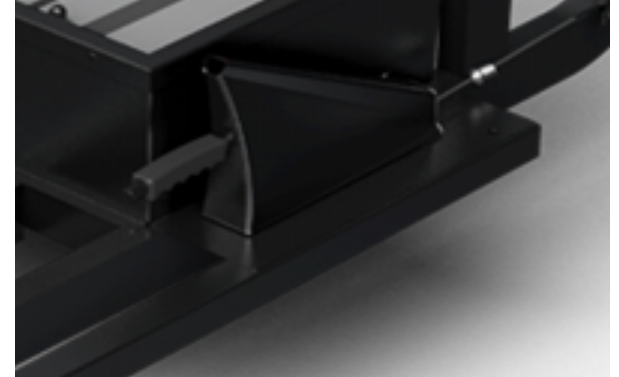
Tighten the diagonal shoulder strap of the seat belt upward toward the shoulder so that the hip belt is properly wrapped under the abdomen.

## Parking Brake



: Warning signal on the meter.

The parking brake handle is located on the left side of the driver's seat.



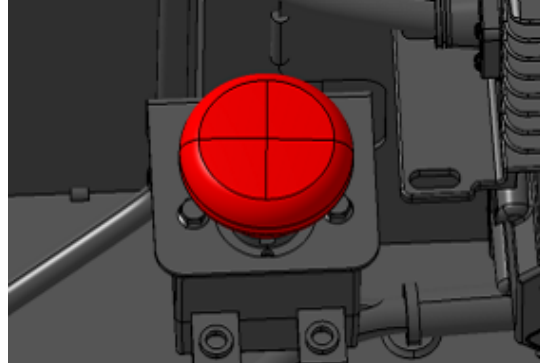
## Pull up the parking brake

1. Press the foot brake
2. Pull the brake lever until the warning symbol on the instrument panel lights up (the warning symbol on the meter will light whether the parking brake is applied lightly or heavier);
3. Loosen the foot brake and determine if the vehicle isn't moving;
4. If the vehicle moves, it means that the parking brake lever must be pulled harder.

## Release parking brake

1. Press the foot brake;
2. Pull the parking brake lever up slightly, press the button, release the parking brake lever and release the button;
3. The warning symbol on the dashboard will turn off.

## Main power switch



The main power switch is located on the right rear side of the rear axle to control the power switch of the whole vehicle.

Press the switch to turn off the entire vehicle.

Pull up the switch to turn on the entire car.

### ▲ NOTE:

When the vehicle is charging, turn off the power switch to prevent accidents caused by starting the vehicle.

### Window handle



Open or close the window manually.

Left door: Turn the handle clockwise to open the window; turn the handle counterclockwise to close the window.

Right door: Turn the handle clockwise to open the window; turn the handle counterclockwise to close the window.

## Radio/Media Player

**POW -VOL+ button:** Short press this button to turn the player on or off. Turning clockwise or counterclockwise will increase or decrease the volume.

**MOD button:** This regulator can be used to switch modes only when Flash drive or SD card is inserted in the player.

**CLK button:** Short press this button to display the clock. Press and hold this button to flash the clock. Press the fast reverse or fast forward button to adjust the clock.



**Fast forward button:** When MP3 is playing, short press to switch to the last played song and long press is to skip 10 played songs. In the radio state, short press to search for the radio station in the semi-automatic mode. Press and hold to adjust the frequency manually. When the clock is adjusted, press this button for +1 hour or +1 minute.

**Rewind button:** When MP3 is playing, press short to select the next song, long press to skip 10 upcoming songs; short press for the semi-automatic forward search for the radio station, long press for manual forward adjustment of frequency, clock adjustment Short press this button for -1 hour or -1 minute.

### Heating



Use to heat the cabin and defrost the front windshield.

Turn the heater on by turning the heater switch clockwise.

Position 1 turn on the natural wind;

Position 2 will increase the wind speed;

Position 3 (red mark) to turn on the warm air.

Turn counterclockwise to switch it off.

The heater fan outlet is located directly above the multimedia player.

You can adjust the warm air direction by adjusting the grid up and down.

## Storage Compartment



Use to place common items and water cups or bottles.

**▲ NOTE:**

Do not use high water cups to prevent it from tipping over in sudden accelerating or braking circumstances. Please mindful that things may fall off out while driving.

### Cell Holder

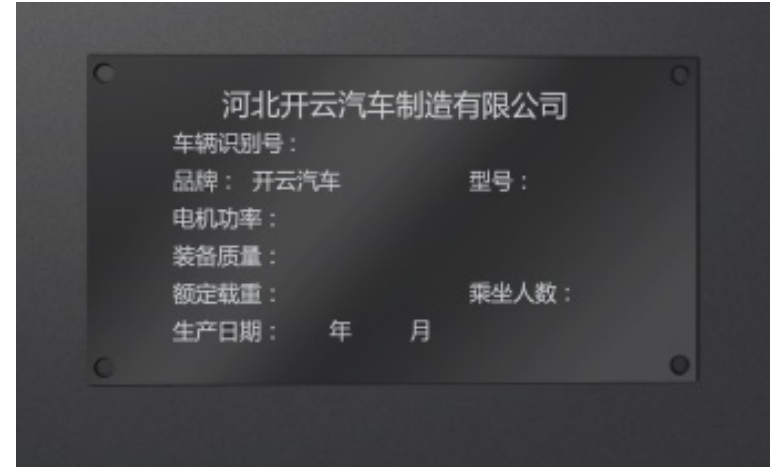


Attach the front end of the phone to the top edge of the bracket and lift it up hard.  
Fix the phone on the stand and adjust it to the required angle.

**▲ NOTE:**

Do not use excessive force that can cause the damage the phone holder.

### Vehicle Nameplate



The vehicle's nameplate identifies the basic information of the vehicle and is located below the right side of the passenger seat.

**▲ NOTE :**

The vehicle identification code is a unique number given to only one car.

## Inspection before start

Confirm the cleanliness of windshield, rearview mirror and lights

Check the remained battery capacity;

Check the tire pressure;

Check the brake performance;

Check and adjust rearview mirror;

Check the warning indicator light;

Check the leakage of liquid.

## Start

Clockwise rotate the key, open the start button ;

Loosen the brake, the dashboard light will turn off

Change the gear position to forward

Slightly step on the accelerator pedal to begin the trip

### Warning :

The fording depth cannot exceed 170mm, or the motor may inflow and damaged.

The car is not suitable for use in low temperature conditions (below -15°C). Make sure that the car is fully charge otherwise the cold may damage the battery as electrolyte may get frozen.

## Note

Keep the speed of driving stable to make sure of the car best performance.

With bigger load, the vehicle has higher energy consumption.

Try to not overload vehicle.

Try to avoid emergent start or acceleration, as a lot of energy will be wasted and lead to the decrease of driving range or have an effect on the motor.

Try to avoid emerging braking. It can lead to the waste of energy and decrease the driving range.

The insufficient air pressure of the tire will make the rolling resistance larger which will lead to more energy consumption.

Please keep normal tire pressure.

Please drive the car stably to avoid unnecessary emergent acceleration or braking.

The driving range will be affected by the environment and driving habits: lower temperature, frequent acceleration or breaking, uneven road, uphill or full-load driving.

## Charging



### Charging :

Open the charging cover

Make sure that the cable is plugged in to the outlet.

Start charging by connecting the plug with the car.

### ▲ Note :

Please use the original charging wire,

After the charging wire is plugged in the socket, the display lamp will stay lit.

Depending on the standard (110V or 220V), the vehicle can be charged directly using ordinary home outlet.

Turn off the main power switch while charging to avoid the accident.

Charge the car at the temperature of -10°C~41°C.

### ▲ Warning :

Do not charge at the humid environment or during thunder.

## Tire



The tire type is 145R12, which fits the chassis up to the best driving comfort and safety.

### The air pressure regulation

The standard front/rear tire air pressure is 300kpa.

Over-load front tire air pressure is 300kpa, and the rear tire air pressure is 400kpa.

Keep suitable tire air pressure to keep the right driving comfort. If the tire pressure is not up to the specification, it will wear fast, affect car operation, driving and power consumption. Please regularly examine the tire pressure.

Please pump the tire if you find that pressure became lower than the specified standard value.

### ⚠ Warning :

Please do not check the tire pressure when the tire emits heat.

### ⚠ Note :

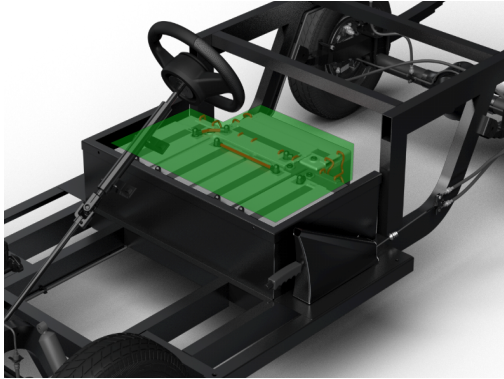
The rear tire pressure may get higher with cargo carriage. With 300kg carriage, the rear tire pressure may be enlarged to 400kpa. Check the tire surface depth and if there is damage ensure it won't influence driving.

Please use the same tire model with the same surface and change the pairs of the tires at the same axle.

Bad road conditions, like driving on the frozen road will lower down the tire adhesive force and may lead to losing the car control.

Please be mindful and drive slowly and safely.

## Battery

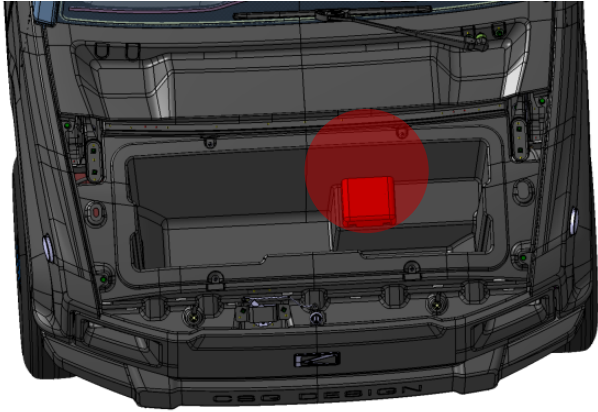


Battery usage and function are affected by many different factors, including driving conditions, driving style and climate. Electric vehicles that are not used for a long time need to periodically charge the battery to prevent the battery life from being shortened due to excessive discharge. Regularly check whether the battery is fixed, whether the connecting wire and the terminal are loose or rusted, and regularly clean the surface of the battery to ensure it is dry and clean.

⚠ **Note :** When performing the above maintenance, the vehicle should be powered off.

⚠ **Warning :** Do not use fast charger while charging.

## Brake maintenance



The brake fluid reservoir is located in the front cabin. When checking the liquid level, if it is lower than the lowest scale line, the brake fluid should be filled into the tank.

**⚠ Note :**

Brake fluid is recommended to be replaced every two years or 20,000 km, with a filling volume of 300 ml per replacement. The brake fluid used in this car is model DOT3 and must not be mixed with other types of brake fluid.

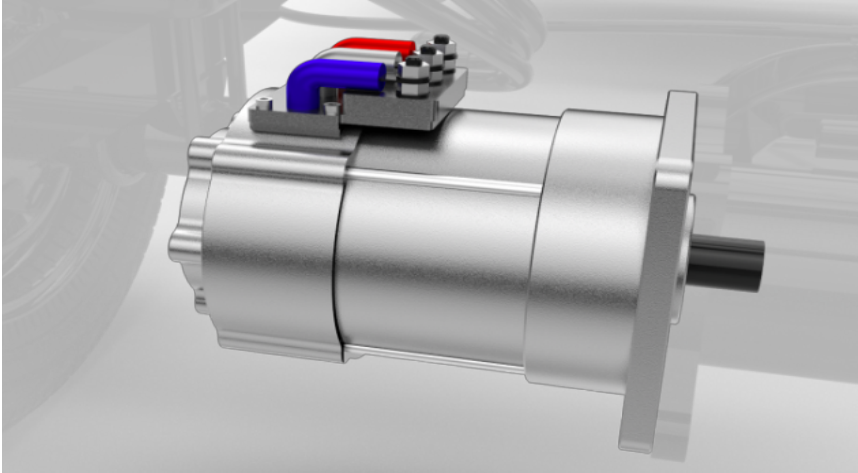
**⚠ Warning :**

Special care should be taken when filling the brake fluid. The brake fluid has a detrimental effect on the human eye and the body finish.

Regularly check the wear pattern of the brake pad. When the thickness of the brake pad is 3-5 mm left, please replace in time.

**⚠ Note :** Replace both left and right while changing the brake pad.

## Motor

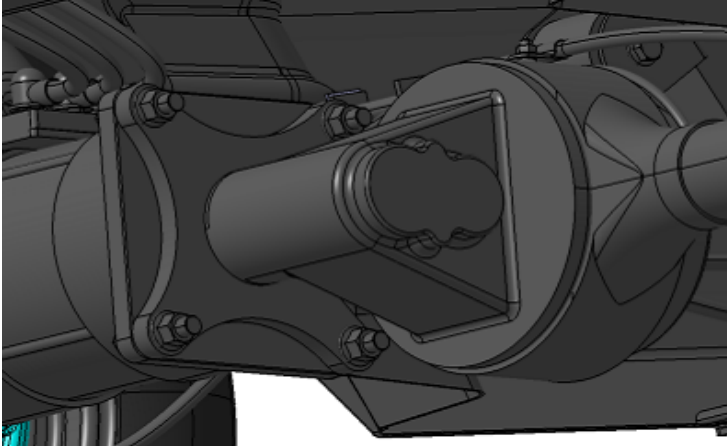


Regularly check the motor status (it is recommended to check every six months, but be aware that the inspection cycle can be shortened under frequent and difficult operating conditions). Remove dirt from the motor surface to ensure good heat dissipation. Check whether the motor connection is reliable. If it is loose or damaged, please tighten it and replace it to avoid abrupt contact or poor localization and ablation.

**▲ Note :**

The power should be off while checking and maintaining the motor to avoid the danger.

## Differential



Check the status of the gear unit regularly.  
Check for leaks and normal operation.

**▲ Note :**

The differential gear oil is recommended to be replaced every year or 10,000 km, and the maximum filling amount per time is not more than 800 ml.

## Car cleaning

Wash the surface and interior of the vehicle from any stains or dirt.

When the front windshield and the headlights have stains on the surface, they should be cleaned immediately to ensure safe driving. If there is corrosive stains such as bird droppings on the surface of the car body, it should be cleaned immediately to prevent damage to the paint surface. Dry immediately after washing the car or put it in a ventilated place to dry naturally.

**▲ Note :**

The cleaning fluid cannot be flowed into the battery during car wash.

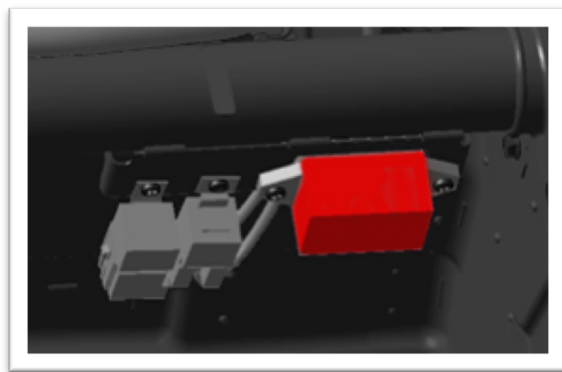
The fog inside the headlights after washing the car is a normal natural phenomenon, and will disappear after sun exposure. If you need to drive immediately after washing the car, please drive carefully. A damp brake may cause the braking distance to be longer.

## Fuse box

All electrical functions and components are protected by fuses to protect the electrical system on the vehicle from damage due to short circuits or current overload.

If an electrical component or function does not work, it may be because the fuse of this component is overloaded and blown. If the same fuse is repeatedly blown, it indicates that the circuit is faulty.

The vehicle 12V fuse box is located on the lower right side of the instrument panel. As shown in the figure, the fuse can be replaced after opening.



10A	10A	25A	10A	5A
制动灯	雨刷器	ON挡	双闪车载终端	点火开关
10A	20A	10A	10A	拨片器
行车灯	点暖烟风器机	喇叭	仪表	

The functions of fuses are as above.

### ⚠ Note :

It is forbidden to use a fuse that is different from the original fuse. When replacing the fuse, be sure to use the original fuse of the same specification. It is strictly forbidden to use other objects instead of the fuse.



## Customer information record

User information		Vehicle information	
owner/company name		VIN	
No./company code		vehicle model	
Mobile phone		Color	
Email		Purchasing date	D M Y
Address			

dealer name :

This car has been checked before delivery

signature/stamp

user signature :

Date :

Date :